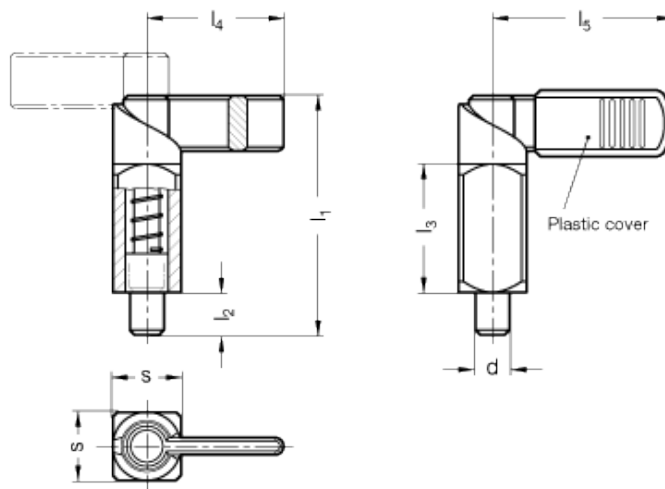


# GN 612.3

Lever indexing plungers with rest position



## technical informations

### Material

Weldable steel.

### Plunger

Nitrided steel. Suggested matching hole in H7 tolerance.

### Plastic cover

Polyamide based technopolymer (PA), black colour, matte finish.

### Standard versions available

- Version A: without plastic cover.
- Version B: with plastic cover.

### Features and applications

Cam action indexing plungers GN 612.3 are used in cases where the locking pin must not protrude all the time. By rotating the lock through 180° the locking pin withdraws itself.

A notch is provided in either position to prevent the lock from rotating.

The square body can therefore be welded in any required position. In order to prevent a change in the spring load by the transferred heat we recommend spot welding the plunger body.

Standard Elements	Main dimensions							Spring pressure		Weight
Description	$d_{-0.02/-0.04}$	s	$l_1$	$l_2$	$l_3$	$l_4$	$l_5$	Preload in N $\approx$	Max. load in N $\approx$	g
GN 612.3-6-16-A	6	16	56	10	30	32	42	12	32	76
GN 612.3-8-16-A	8	16	56	10	30	32	42	12	32	80
GN 612.3-8-20-A	8	20	69	12	38	37	52	21	58	151
GN 612.3-10-16-A	10	16	56	10	30	32	42	12	32	80
GN 612.3-10-20-A	10	20	69	12	38	37	52	21	58	153
GN 612.3-12-20-A	12	20	69	12	38	37	52	21	58	158
GN 612.3-6-16-B	6	16	56	10	30	32	42	12	32	78
GN 612.3-8-16-B	8	16	56	10	30	32	42	12	32	80
GN 612.3-8-20-B	8	20	69	12	38	37	52	21	58	154
GN 612.3-10-16-B	10	16	56	10	30	32	42	12	32	82
GN 612.3-10-20-B	10	20	69	12	38	37	52	21	58	157
GN 612.3-12-20-B	12	20	69	12	38	37	52	21	58	174



STANDARD MACHINE ELEMENTS WORLDWIDE